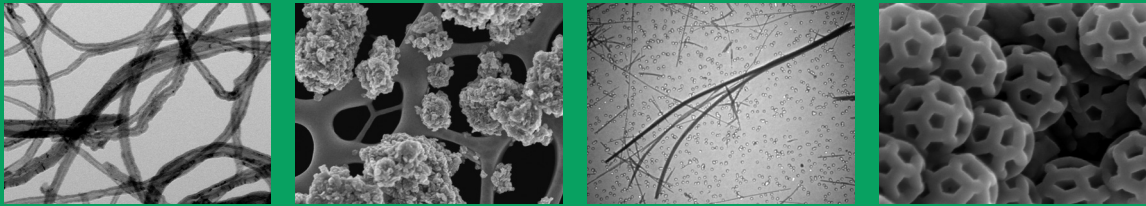
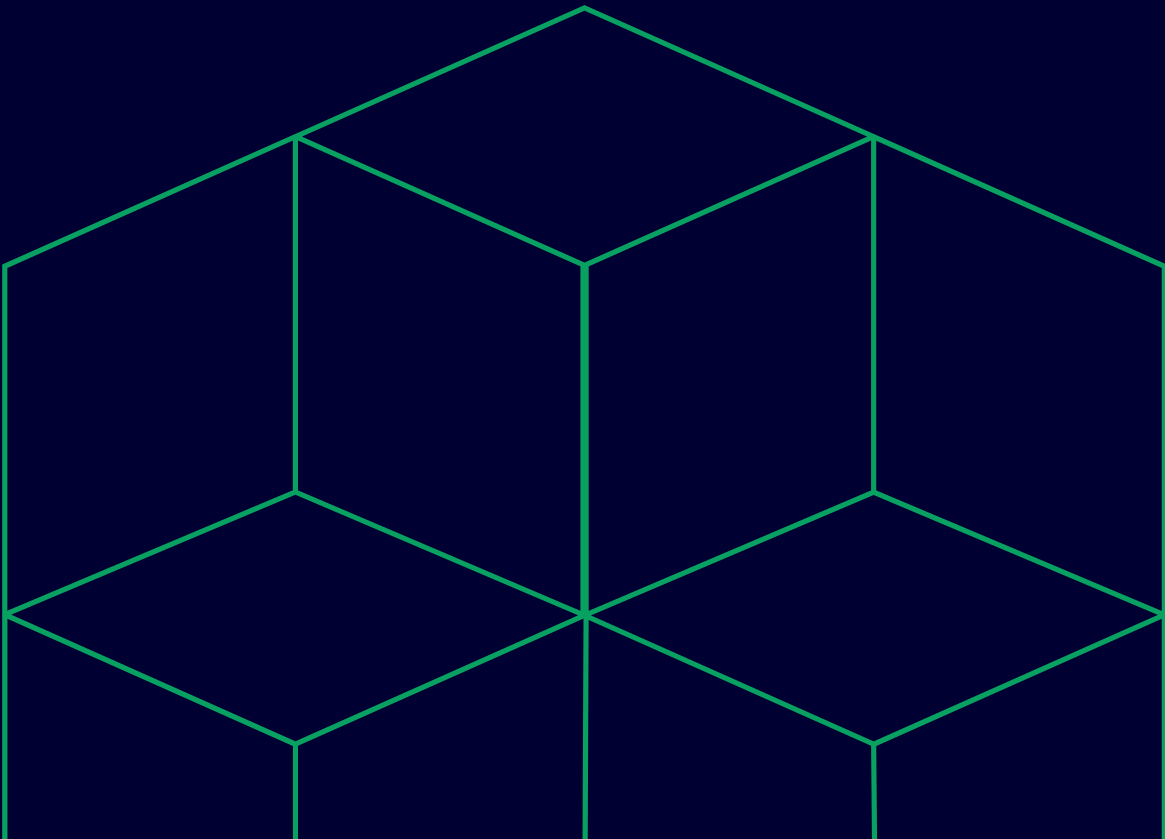


RJ Lee Group

2024 Laboratory Testing Guide



Asbestos Analytical Services



Asbestos Analytical Services - Laboratory Testing Guide 2024

Transmission Electron Microscopy

| Type of Analysis/Service | Turnaround (Days) |
|--|-------------------|
| AHERA Clearance Samples - Air (Submitted in sets of five) | 5 |
| NIOSH 7402 – Air | 5 |
| NIOSH 7402 – Air w/RCF Fibers | 5 |
| ISO 10312 (direct) - Air | 10 |
| ISO 13794 (indirect) - Air | 10 |
| ISO 22262-2 – Bulk | 10 |
| ASTM D5756 – Bulk | 10 |
| ASTM – Dust 5755 - Microvac | 5 |
| ASTM D6480 – Surface dust wipe | 5 |
| USEPA 100.1 - Non-potable water | 5 |
| USEPA 100.2 - Drinking Water | 5 |
| Chatfield SOP-1988-02/NY ELAP 198.4 (NOB) - Bulk | 5 |
| Sludge or Mud sample: (weight percent) | 10 |
| USAEPA Draft Contract 68-02-3266 (Yamate) - Level I | 5 |
| USAEPA Draft Contract 68-02-3266 (Yamate) - Level II | 5 |
| USAEPA Draft Contract 68-02-3266 (Yamate) - Level III | |

Polarized Contrast Microscopy (PCM)

| Type of Analysis/Service | Turnaround (Days) |
|--------------------------|-------------------|
| NIOSH 7400 – Air | 5 |
| NIOSH 7400 – B rules | 5 |

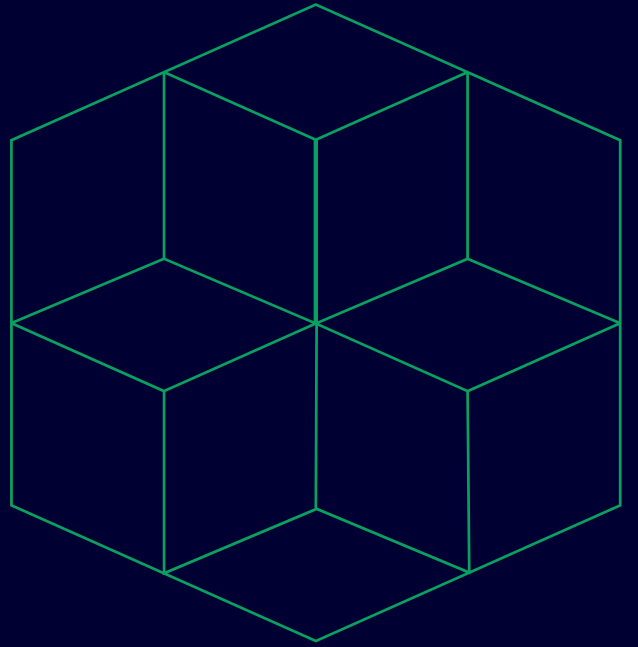
CONNECT WITH AN EXPERT
1.800.860.1775 | www.rjleegroup.com

RJ Lee Group 

Asbestos Analytical Services - Laboratory Testing Guide 2024

Polarized Light Microscopy (PLM)

| Type of Analysis/Service | Turnaround (Days) |
|---|-------------------|
| EPA 600/R-93/116: | |
| * Bulk (visual estimate) - per layer - EPA/600/R-93/116 (1% - Visual Est) * 40 CFR Part 763 Appendix E to Subpart E of 763 * Additional charges for multiple layered samples will apply. | 5 |
| * Untreated 400 Point Count - EPA/600/R-93/116 (0.25% - 400 ptct) | 10 |
| * Treated 400 Point Count - EPA/600/R-93/116 (0.25% - 400 ptct with gravimetry) | 10 |
| * Untreated 1000 Point Count - EPA/600/R-93/116 (0.1% - 1000 ptct) | 10 |
| * Treated 1000 Point Count - EPA/600/R-93/116 (0.1% - 1000 ptct with gravimetry) | 10 |
| * Soil/Rock/Raw Materials/Debris - NYELAP 198.6 - Non-Friable materials | 10 |
| *Naturally Occurring Asbestos In Soil, Rock or Raw Materials. | |
| *Additioanl Processing charges may apply. | |
| CARB 435 – serpentine aggregate | 10 |
| ISO 22262-1 -Bulk -Quantintative -qualitative determination of asbestos in commercial bulk materials | 10 |
| ISO 22262-2 -Bulk -Quantintative - Quantitative determination of asbestos by gravimetric and microscopical methods | 10 |
| Fly ash determination in sediment (OPT.023) | 10 |
| Component Characterization / Mineral ID | 10 |
| NYELAP 198.1 – Friable materials | 5 |
| NYELAP 198.6 – Non-Friable materials | 5 |



RJ Lee Group

800 Presque Isle Drive
Pittsburgh, PA 15239
clientrelations@rjleegroup.com